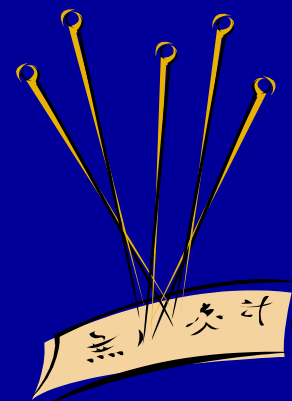
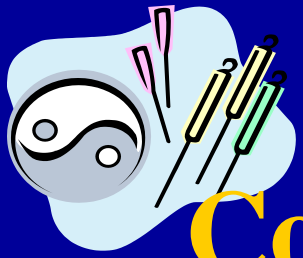


Clinical Practices of Acupuncture

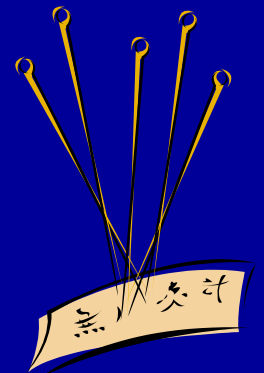
Shu-Ming Wang, M.D.
University of California-Irvine

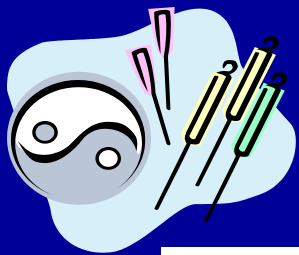




Common Acupuncture Systems

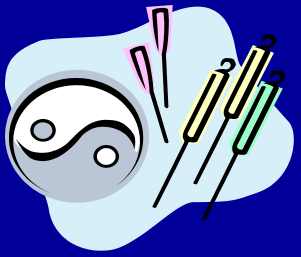
- **Body acupuncture**
- **Microsystems acupuncture**
 - **Hand (Korea)**
 - **Foot (Chinese)**
 - **Scalp (Chinese, Japanese)**
 - **Ear (French, Chinese)**
 - **Pulse (Chinese)**





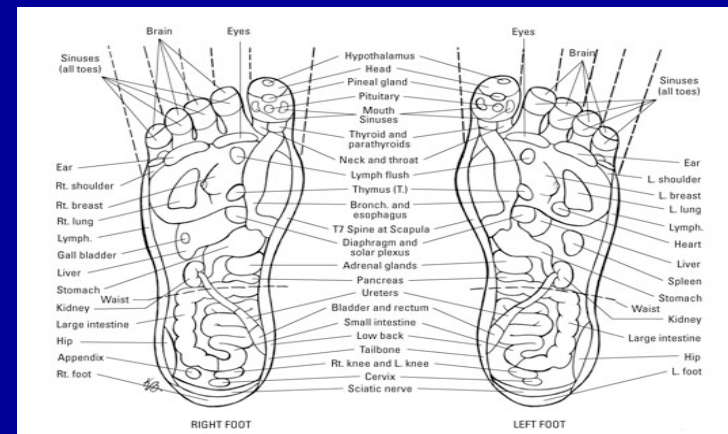
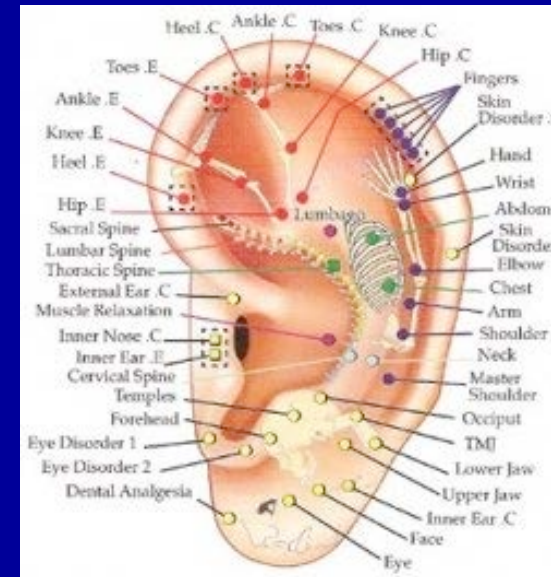
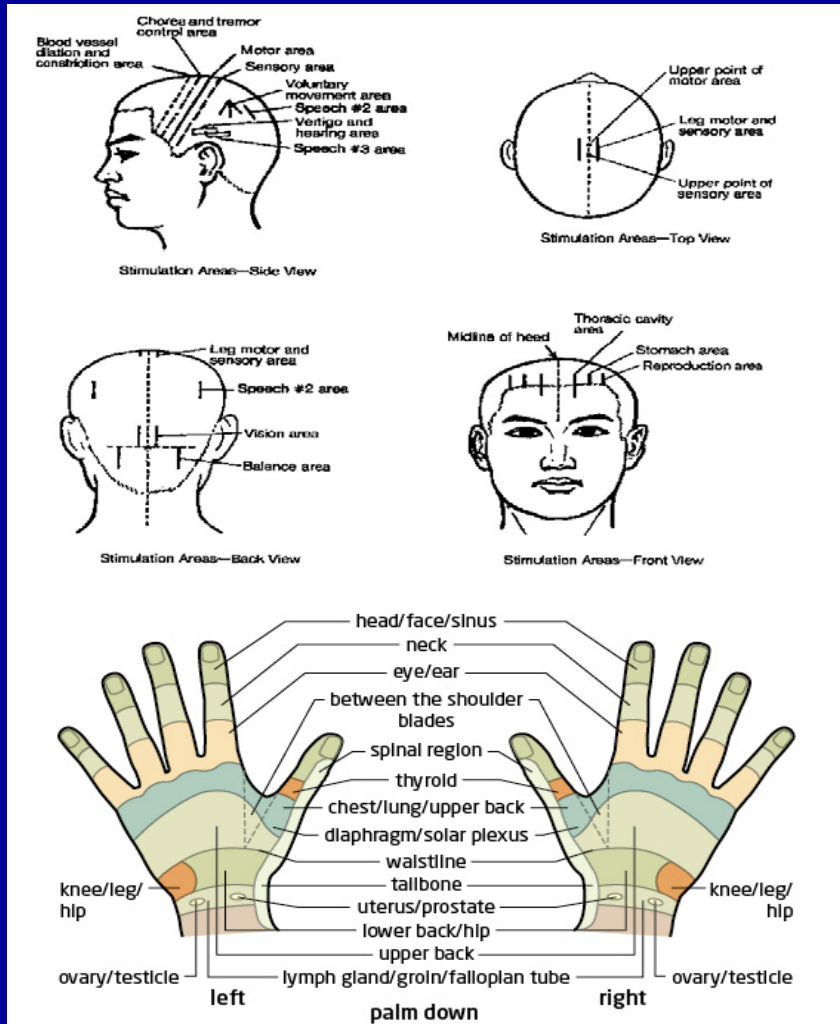
Body Acupuncture Points

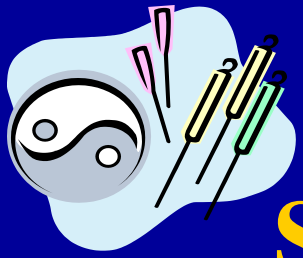
Bladder (BL)	Large Intestine (LI)	Bladder (BL)	Large Intestine (LI)	Bladder (BL)	Large Intestine (LI)
1 BL1	51 LI4	1 BL1	51 LI4	1 BL1	51 LI4
2 BL2	52 LI10	2 BL2	52 LI10	2 BL2	52 LI10
3 BL7	53 LI11	3 BL7	53 LI11	3 BL7	53 LI11
4 BL10	54 LI15	4 BL10	54 LI15	4 BL10	54 LI15
5 BL13	55 LI20	5 BL13	55 LI20	5 BL13	55 LI20
6 BL23	Liver (LV)	6 BL23	Liver (LV)	6 BL23	Liver (LV)
7 BL25	56 LV2	7 BL25	56 LV2	7 BL25	56 LV2
8 BL27	57 LV3	8 BL27	57 LV3	8 BL27	57 LV3
9 BL28	58 LV8	9 BL28	58 LV8	9 BL28	58 LV8
10 BL29	Lung (LU)	10 BL29	Lung (LU)	10 BL29	Lung (LU)
11 BL30	59 LU1	11 BL30	59 LU1	11 BL30	59 LU1
12 BL31	60 LU5	12 BL31	60 LU5	12 BL31	60 LU5
13 BL32	61 LU6	13 BL32	61 LU6	13 BL32	61 LU6
14 BL33	62 LU7	14 BL33	62 LU7	14 BL33	62 LU7
15 BL34	63 LU9	15 BL34	63 LU9	15 BL34	63 LU9
16 BL40	64 LU10	16 BL40	64 LU10	16 BL40	64 LU10
17 BL57	Pericardium (PE)	17 BL57	Pericardium (PE)	17 BL57	Pericardium (PE)
18 BL58	65 PE3	18 BL58	65 PE3	18 BL58	65 PE3
19 BL60	66 PE6	19 BL60	66 PE6	19 BL60	66 PE6
Conception Vessel (CV)	67 PE7	Conception Vessel (CV)	67 PE7	Conception Vessel (CV)	67 PE7
20 CV4	Small Intestine (SI)	20 CV4	Small Intestine (SI)	20 CV4	Small Intestine (SI)
21 CV6	68 SI3	21 CV6	68 SI3	21 CV6	68 SI3
22 CV12	69 SI4	22 CV12	69 SI4	22 CV12	69 SI4
23 CV17	70 SI5	23 CV17	70 SI5	23 CV17	70 SI5
24 CV22	71 SI8	24 CV22	71 SI8	24 CV22	71 SI8
Gall Bladder (GB)	72 SI10	Gall Bladder (GB)	72 SI10	Gall Bladder (GB)	72 SI10
25 GB2	73 SI11	25 GB2	73 SI11	25 GB2	73 SI11
26 GB8	74 SI17	26 GB8	74 SI17	26 GB8	74 SI17
27 GB14	Spleen (SP)	27 GB14	Spleen (SP)	27 GB14	Spleen (SP)
28 GB20	75 SP3	28 GB20	75 SP3	28 GB20	75 SP3
29 GB21	76 SP4	29 GB21	76 SP4	29 GB21	76 SP4
30 GB30	77 SP6	30 GB30	77 SP6	30 GB30	77 SP6
31 GB34	78 SP8	31 GB34	78 SP8	31 GB34	78 SP8
32 GB39	79 SP9	32 GB39	79 SP9	32 GB39	79 SP9
33 GB40	80 SP10	33 GB40	80 SP10	33 GB40	80 SP10
34 GB41	81 SP12	34 GB41	81 SP12	34 GB41	81 SP12
Governing Vessel (GV)	82 SP16	Governing Vessel (GV)	82 SP16	Governing Vessel (GV)	82 SP16
35 GV4	Stomach (ST)	35 GV4	Stomach (ST)	35 GV4	Stomach (ST)
36 GV14	83 ST2	36 GV14	83 ST2	36 GV14	83 ST2
37 GV16	84 ST3	37 GV16	84 ST3	37 GV16	84 ST3
38 GV20	85 ST6	38 GV20	85 ST6	38 GV20	85 ST6
39 GV24.5	86 ST7	39 GV24.5	86 ST7	39 GV24.5	86 ST7
40 GV25	87 ST16	40 GV25	87 ST16	40 GV25	87 ST16
41 GV26	88 ST18	41 GV26	88 ST18	41 GV26	88 ST18
Heart (HE)	89 ST25	Heart (HE)	89 ST25	Heart (HE)	89 ST25
42 HE3	90 ST35	42 HE3	90 ST35	42 HE3	90 ST35
43 HE7	91 ST36	43 HE7	91 ST36	43 HE7	91 ST36
Kidney (KI)	92 ST40	Kidney (KI)	92 ST40	Kidney (KI)	92 ST40
44 KI1	93 ST44	44 KI1	93 ST44	44 KI1	93 ST44
45 KI2	Triple Warmer (TW)	45 KI2	Triple Warmer (TW)	45 KI2	Triple Warmer (TW)
46 KI3	94 TW3	46 KI3	94 TW3	46 KI3	94 TW3
47 KI5	95 TW4	47 KI5	95 TW4	47 KI5	95 TW4
48 KI6	96 TW5	48 KI6	96 TW5	48 KI6	96 TW5
49 KI7	97 TW15	49 KI7	97 TW15	49 KI7	97 TW15
50 KI27	98 TW17	50 KI27	98 TW17	50 KI27	98 TW17
	99 TW21		99 TW21		99 TW21



Microsystems Acupuncture

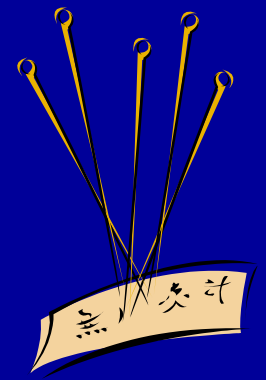
Somatotopic Mapping

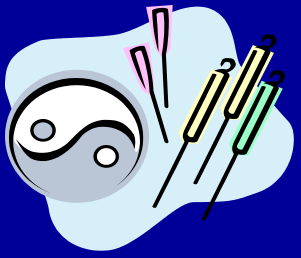




Styles of Acupuncture Practice

- Traditional Chinese Acupuncture Style
- Japanese Acupuncture Style
- Korean Acupuncture Style
- Five Element Acupuncture Style
- Personal Style Acupuncture Style
- Formulary Style Acupuncture Style





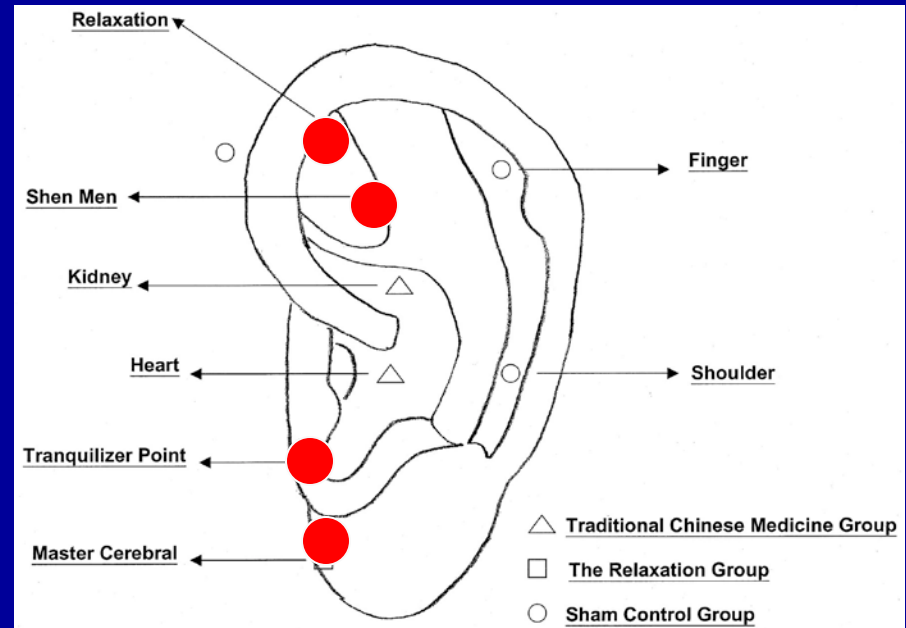
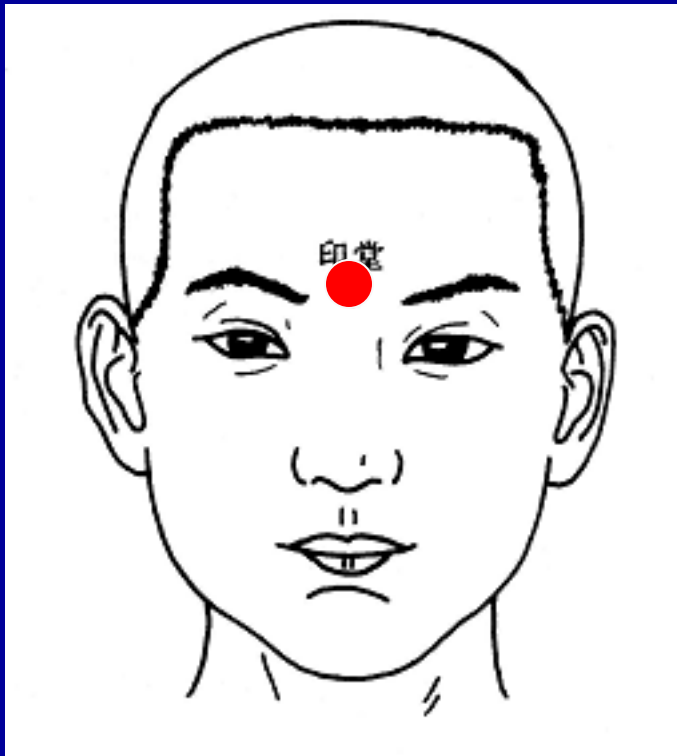
Acupuncture Techniques

- **Pressure**
- **Needle**
- **Moxa**
- **Cupping**
- **Electrical stimulation**
- **Laser**
- **Fluid or medication injection**
- **Ultrasound**



Acupuncture for Clinical Conditions

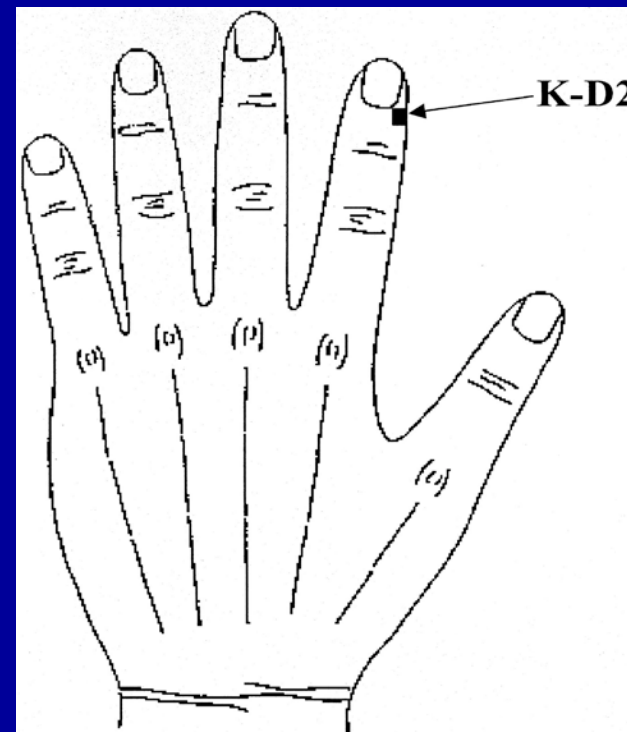
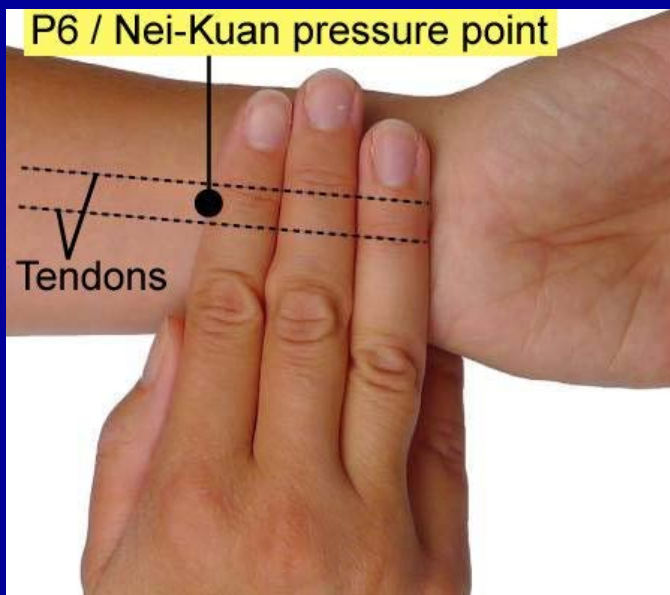
- Preoperative anxiety





Acupuncture for Clinical Conditions

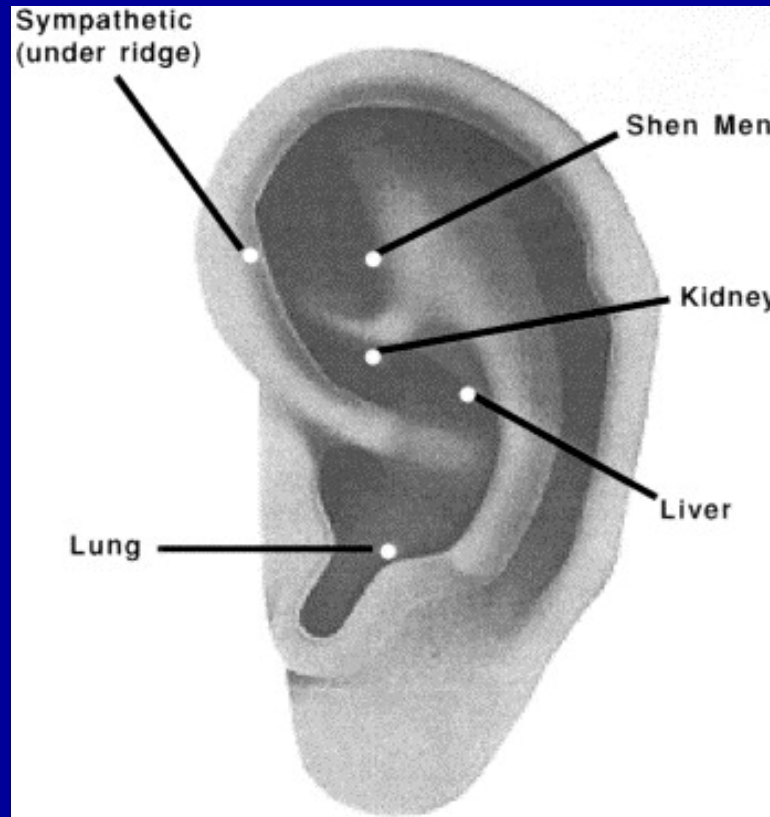
- Postoperative Nausea and Vomiting





Acupuncture for Clinical Conditions

- Addition symptoms management





Acupuncture for Clinical Conditions

- Pelvic & Back pain

Figure D3a.2 The locations of auricular points

